

Hawai'i Workplace Law Seminar

Past Details

October 14, 2016

7:15 AM - 2:15 PM HAST

Hawaii Convention Center
1801 Kalakaua Avenue
Honolulu, HI 96815

Registration Fee: \$75.00

Credits

CLE Pending
HRCI Pending
SHRM Pending

Please join **Jackson Lewis P.C. A.L.C.** in collaboration with **SHRM Hawaii** & the **Hawaii Employers Council** for an informative half-day legal update. This "rapid-fire" program will explore cutting edge employment law issues where participants will learn about the latest and rapidly developing areas of workplace law from our Hawaii attorneys as well as nationally recognized speakers throughout the firm.

Agenda

7:15 a.m. – 8:00 Registration and Continental Breakfast

8:00 a.m. – 8:30 a.m.

Employee Benefits Checkup

Presented by: Joy Napier-Joyce

Review ACA, ERISA and Internal Revenue Code compliance developments and discuss difficulties involved with the intersection of benefits, leaves of absence, health plan eligibility practices and executive compensation.

8:30 a.m. – 9:00 a.m.

Harassment Prevention: Rebooting Your Training

Presented by: Wayne Yoshigai

Review best practices to avoid or defend against harassment claims. Learn whether the EEOC's recommendations for harassment prevention can work for you.

9:00 a.m. – 9:30 a.m.

Pay Equity: Increased Obligations and Exposure

Presented by: Jennifer Seda

This session will help employers better understand the pay discrimination landscape and how they can run privileged pay analyses, what to consider in making pay decisions going forward, and how to defend themselves in DOL investigations and litigation.

9:30 a.m. – 10:00 a.m.

Outsourcing: You're a Joint Employer with Whom?

Presented by: Robert Murphy

Learn the ins and outs of the NLRB's new standard that makes it easier to pull more entities into the

Speakers



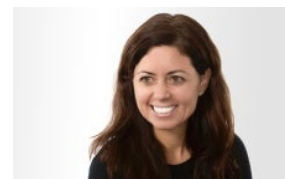
[Tyler A. Brown](#)

Principal
San Francisco 415-394-9400
Email



[Robert L. Murphy](#)

Principal
San Diego 619-573-4906
Email



[Joy M. Napier-Joyce](#)

Principal
Baltimore 410-415-2028
Email



[Andrew L. Pepper](#)

Office Managing Principal
Honolulu 808-526-0404
Email

“joint employer” canopy and how to determine what compliance approach is best for you.

10:00 a.m. – 10:30 a.m.

Jerks at Work: Dealing with Off-Duty Workplace Misconduct

Presented by: Andrew Pepper

When can an employee's private life affect his/her employment? More often than most employees expect. Learn where the line between private life and work life is drawn.

10:30 a.m. – 10:45 a.m. Break

10:45 a.m. – 11:30 a.m. Breakouts

A. Administering Employee Benefit Plans: Fiduciary Best Practices and Avoiding Administrative Pitfalls Presented by: Joy Napier-Joyce

This session will cover some of the more common operational failures in administering qualified retirement and health and welfare plans. We will also cover best practices for risk reduction, corporate governance and fiduciary responsibilities under ERISA.

B. Independent Contractor...Or Not

Presented by: Tyler Brown & Christian “Christy” Gray

Misclassifying workers can be a costly violation of various Hawaii and federal laws. Learn how to use Hawaii's ABC test to make your best case for IC status and what differences could be imposed by the NLRB.

11:30 a.m. – 12:15 p.m. Breakouts

C. Top 10 OFCCP Enforcement Trends

Presented by: Jennifer Seda

Learn the latest compliance trends and how employers can be proactive and responsive to a potential OFCCP audit.

D. What's Left of Your Employee Handbook Post-NLRB

Presented by: Robert Murphy

The NLRB's activism has caused employers to revise their employee handbooks to avoid unfair labor practice charges. Hear JL's latest do's and don'ts in employee handbook revisions.

12:15 p.m. – 1:15 p.m. Lunch Presentation:

LGBTQ: Managing an Evolving Workforce

Presented by: Wayne Yoshigai

1:15 p.m. – 2:15 p.m. "Ask the Attorney"

Bring us your Labor & Employment questions as Jackson Lewis attorneys will be available for informal Q&A with attendees.



Wayne S. Yoshigai

Principal
Honolulu 808-526-0404
Email

