

## Managing Serious Workplace Threat

### Past Details

June 13, 2019

8:00 AM - 11:00 AM EST

Jackson Lewis P.C.  
75 Park Plaza  
4th Floor  
Boston, MA 02216

Workplace violence is a serious problem that can strike any business, across all industries, at any time and often with tragic and devastating consequences. During this program, you will hear from four of the top experts in the field on how best to prepare for, avoid, respond to and manage serious workplace threats. Using recent examples of workplace violence, the panelists will examine and discuss the following:

- Evolution of a threat
- The pathway to violence
- Preemptive legal and security measures
- The benefits of having a threat management team in place

### Agenda

8:00 — 8:30 a.m. Registration and Breakfast

8:30 — 11:00 a.m. Program

### Contact Us for More Information

Please contact Brooke Cassens at [Email](#).

### Speakers

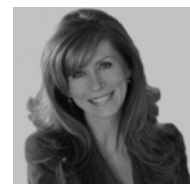


[Paul V. Kelly](#)

Principal  
Boston 617-305-1263  
[Email](#)



Larry Curran  
Investigative Counsel  
Pinkerton Consulting



Mariellen Burns  
Regan Communications



Ronald Schouten  
Director of the Law & Psychiatry  
Massachusetts General Hospital

viewing of information on this website.

\*The National Operations Center serves as the firm's central administration hub and houses the firm's Facilities, Finance, Human Resources and Technology departments.